

PhotoShop

1

Removing Parts of a Picture For Later Use

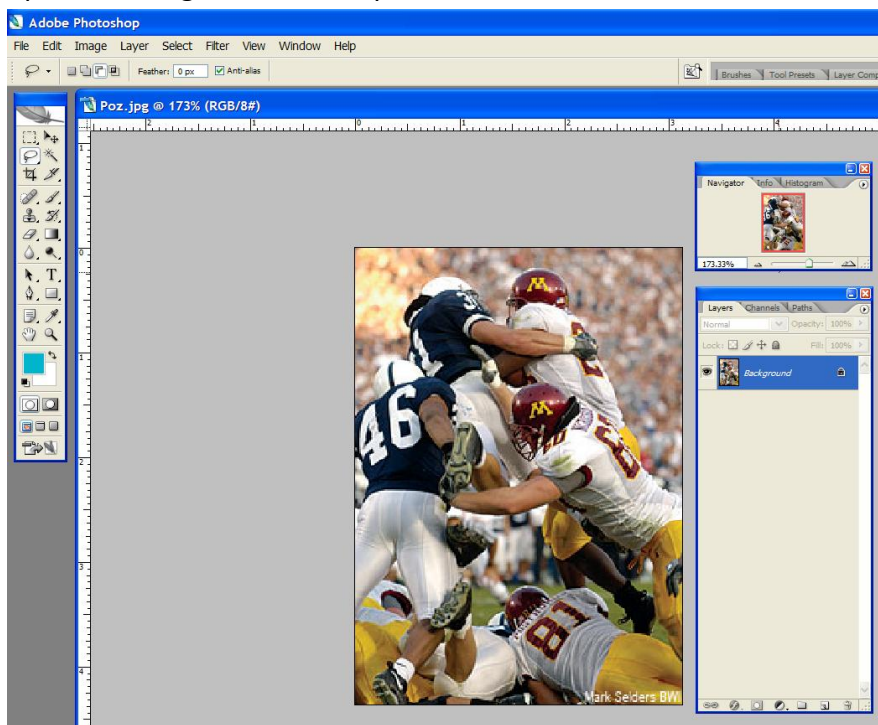
Adobe Photoshop is used to process graphic images for use in other Adobe Creative Suite applications. Created images can also be used in other applications such as Office Suite, if the images are saved in a format used in these applications. File types such as JPG, GIF, or TIF files are more universally used in other applications.

For an example, we will open a JPG image and select part of the image for use in a Microsoft Word Document.



We will use this picture and will pull out the image of Paul Pozluzny making a goal-line stop against the University of Minnesota in 2006,

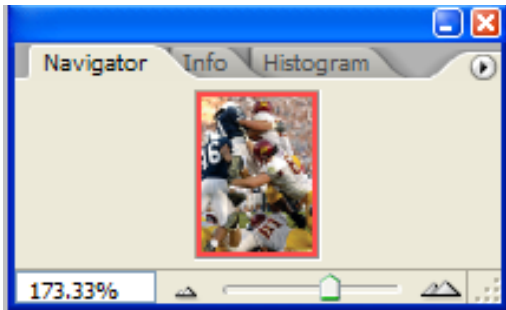
1. Open the image in Photoshop



PhotoShop

2

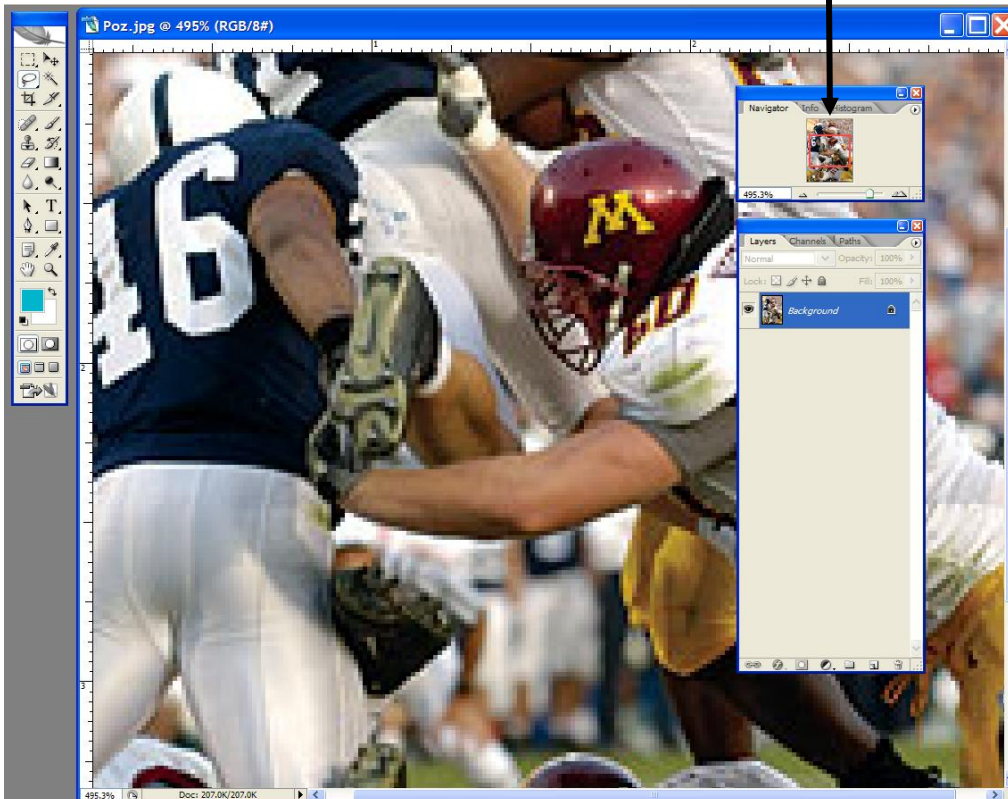
2. Use the **Zoom** slider in the **Navigator Palette** to enlarge the image to make it easier to work with.



Zoom Slider

Sliding the zoom slider to the right enlarges the picture. Note how the red **Image Frame** is now smaller than the entire image. Moving this frame shows that portion of

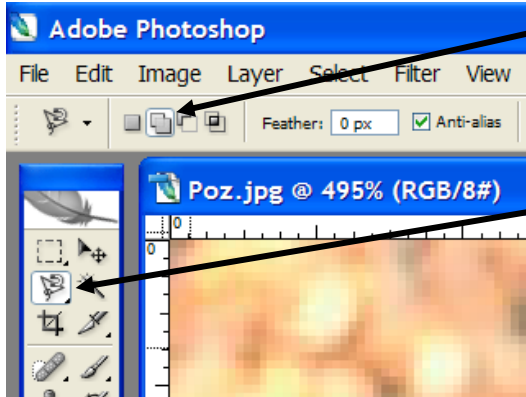
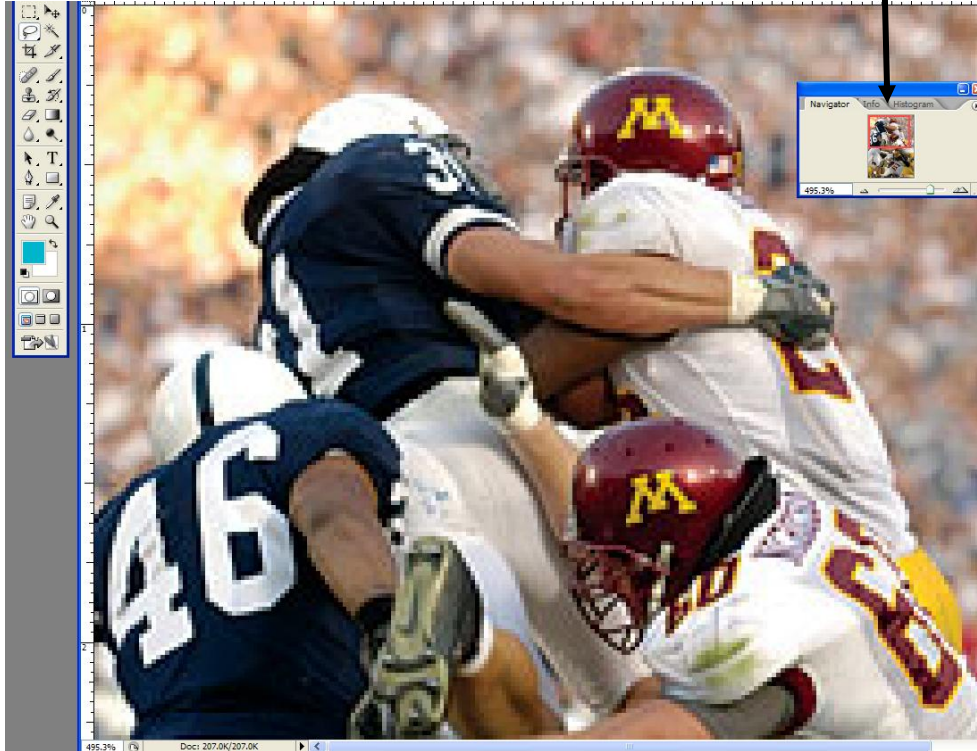
the image in the work area.



PhotoShop

3

3. Move the Navigator Frame to show the upper portion of the picture.



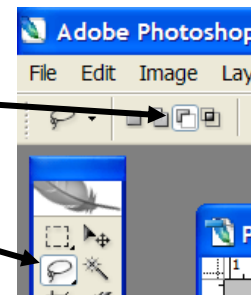
4. Choose the **Add to Selection** option from the control palette and the **Magnetic Lasso** tool from the toolbox .

5. Left click and drag a loop around the portion of the image you want to select (You do not need to match the lines precisely as you will “fine tune” the selection later.)



6. Zoom up and choose the **Subtract from Selection** tool

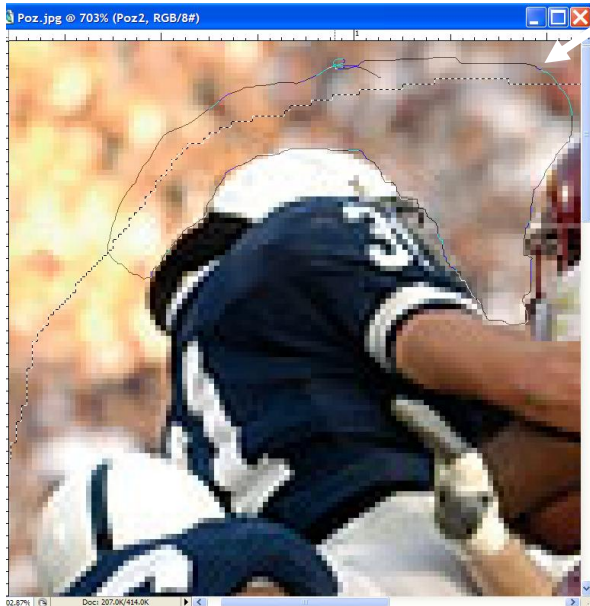
7. Also, choose the **Lasso** tool from the control palette.



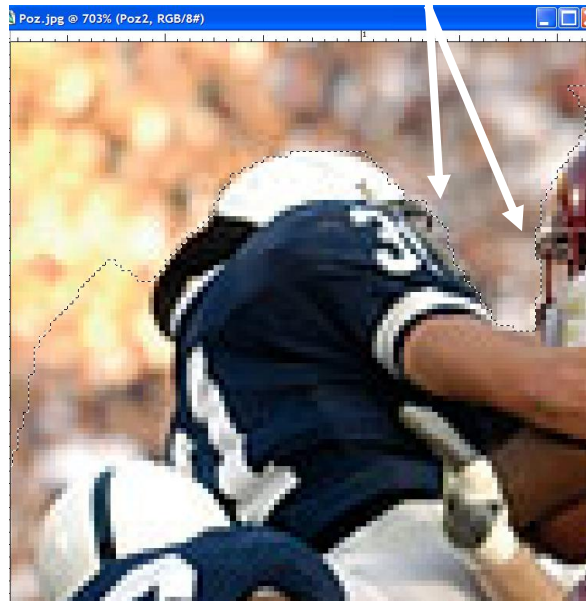
PhotoShop

4

With this tool selection, it is possible to remove some of the selected area of the picture until only the desired portion remains.

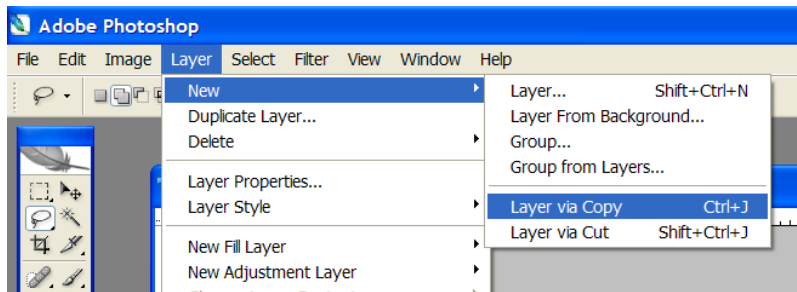


By dragging a loop around an area to be removed, the previously created magnetic lasso line is formed around the area outlined.



Continue this process until all of the excess original selection has been trimmed.

Note: Changing the tool selection to **Add to Selection** will expand the selection to include areas that may have been left out.



8. After all of the trimming has been done, choose the **Layer – New – Layer via Copy** options from the menu to place the selection in its own layer

This layer can then be added (copied and pasted) to another document or can be “reassigned” to the existing graphic after changes have been made to the background from which it was taken.

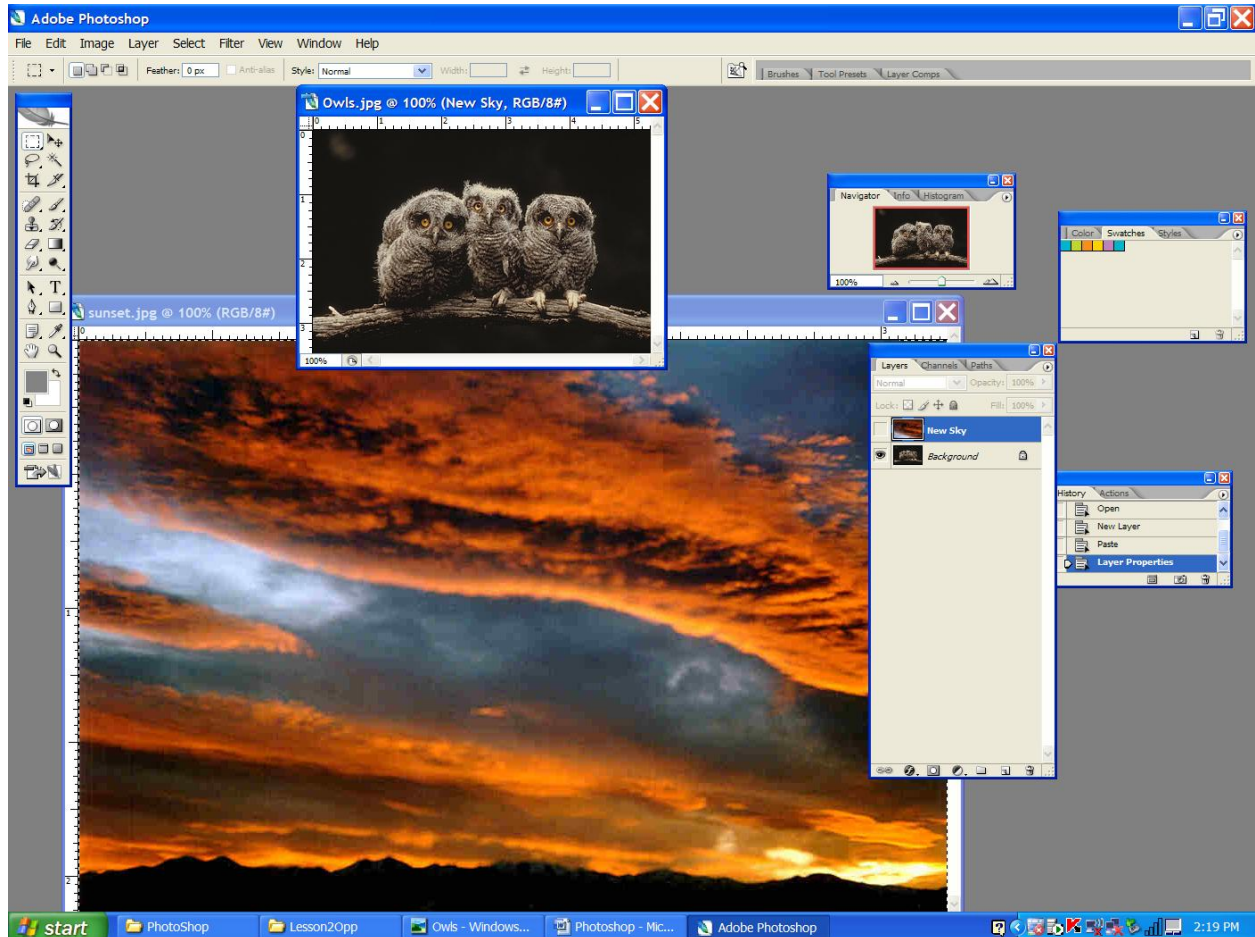


PhotoShop

5

Working With Layers

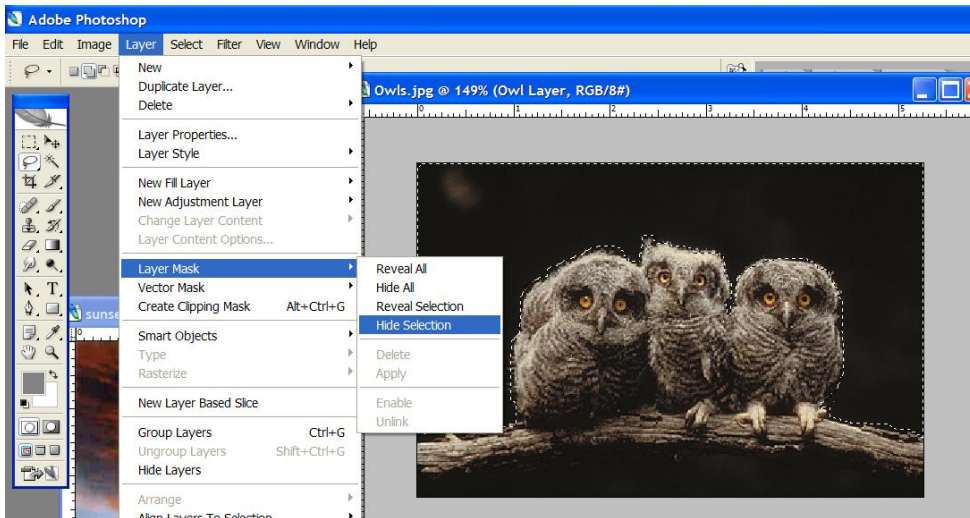
Pictures can be edited to change the appearance of one area while not affecting another area. This is done by masking one area to work on another.



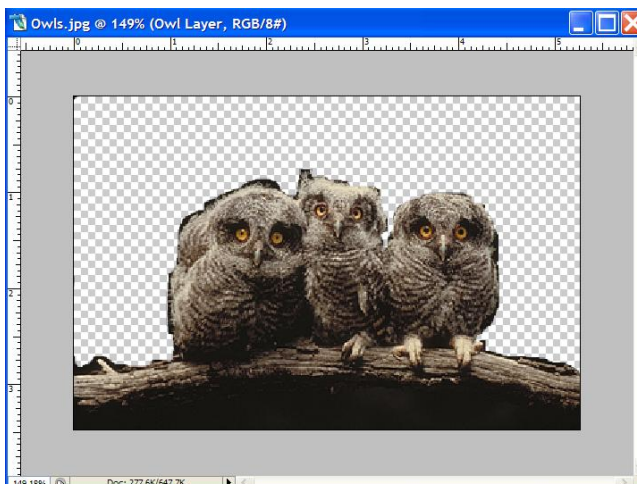
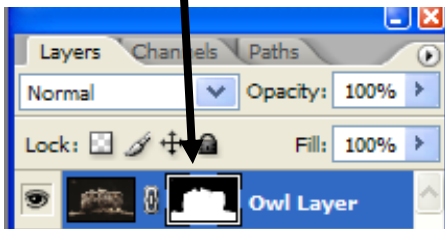
1. Open both the owl and sky pictures in Photoshop
 - a. Select the sky picture and use the **Edit – Select All** options from the menu
 - b. Select the owl picture and use the **Create New Layer** option from the **Layer palette**
 - c. Make this new layer visible and **paste** the sky picture in it
 - d. Name the new layer **New Sky**

PhotoShop

6



2. In the owl layer, select all of the relatively black area above and to the sides of the owls (Use the **magnetic lasso** to select the bulk of it and the **lasso tool** along with the **add to selection** option from the control palette to do this.)
3. Use the **Layer – Layer Mask – Hide Selection** options from the menu to create a mask in the owl layer.

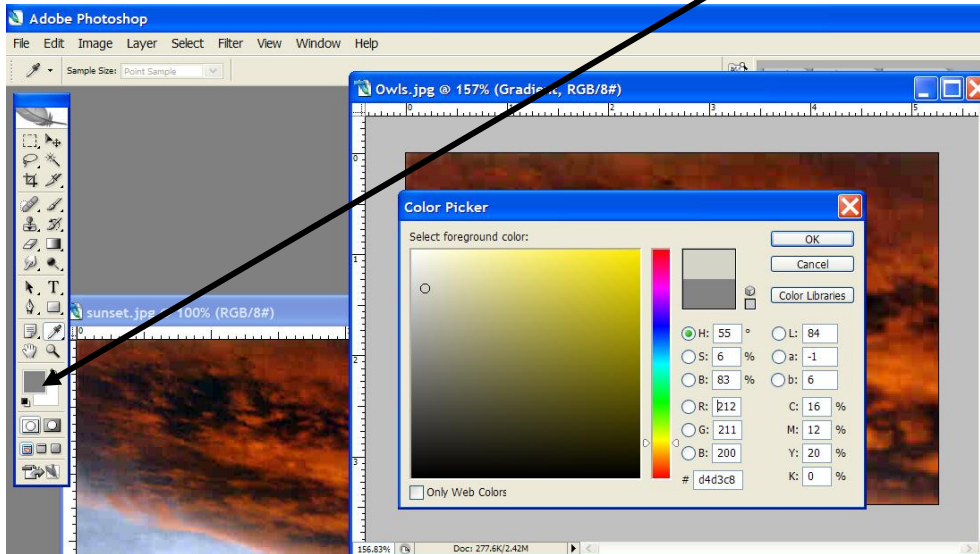


The owl picture now appears as it does to the left. The *checker board* area indicates the part that is masked.

PhotoShop

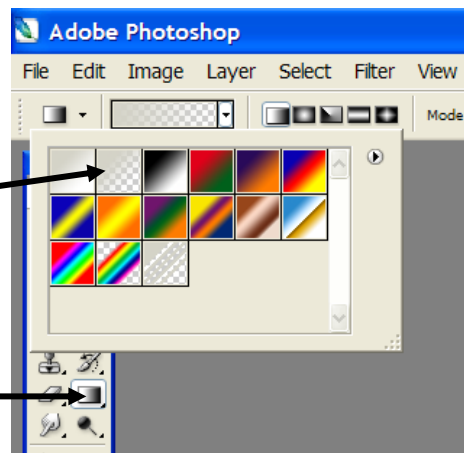
7

3. Create a new layer in the owl picture and name it **Gradient** (Use the **Create New Layer** option in the menu)
4. With this Gradient layer still chosen, use the **Set Foreground Color** button from the toolbar.



5. When the **color picker** comes up, choose a shade that will match the existing color of the projected image (In this case we use a shade of gray to match the owls)

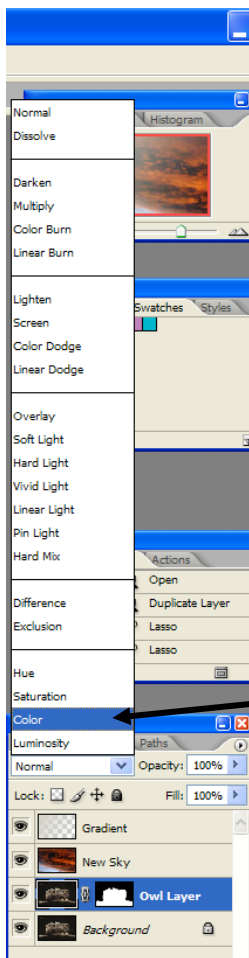
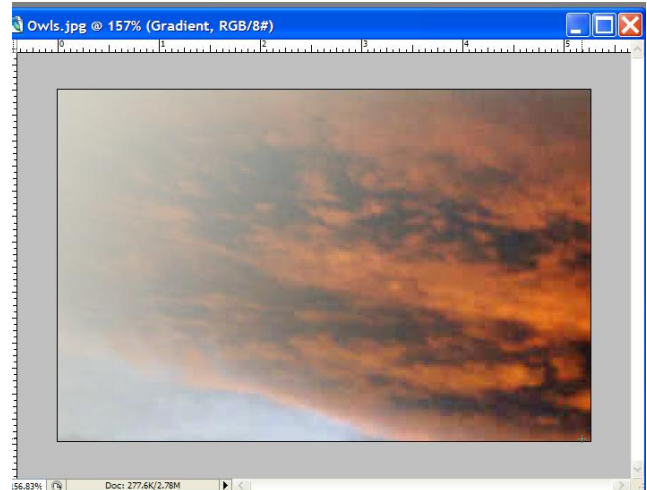
6. Choose the **Gradient Tool**
7. In the dropdown menu, choose the **Foreground to Transparent** option



PhotoShop

8

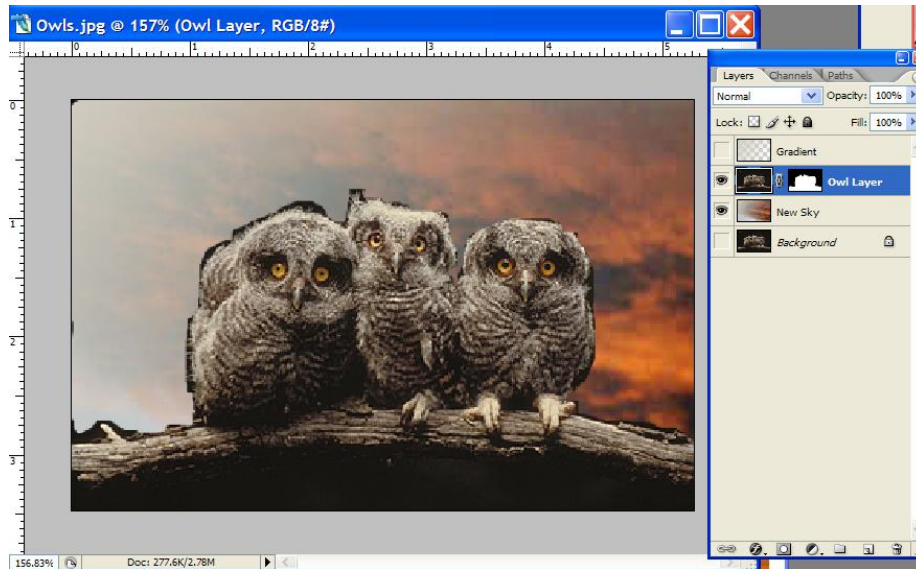
7. With the Gradient tool selected **drag a line from the upper left to the lower right corner of the *New Sky* layer**
 - a. The gradient will then cover the entire layer



8. In the **Layers Palette**, set the **blending mode** to **color**.

PhotoShop

9



9. Move the masked layer above the gradient **New Sky** layer to place the masked owl picture in front of the new sky.